

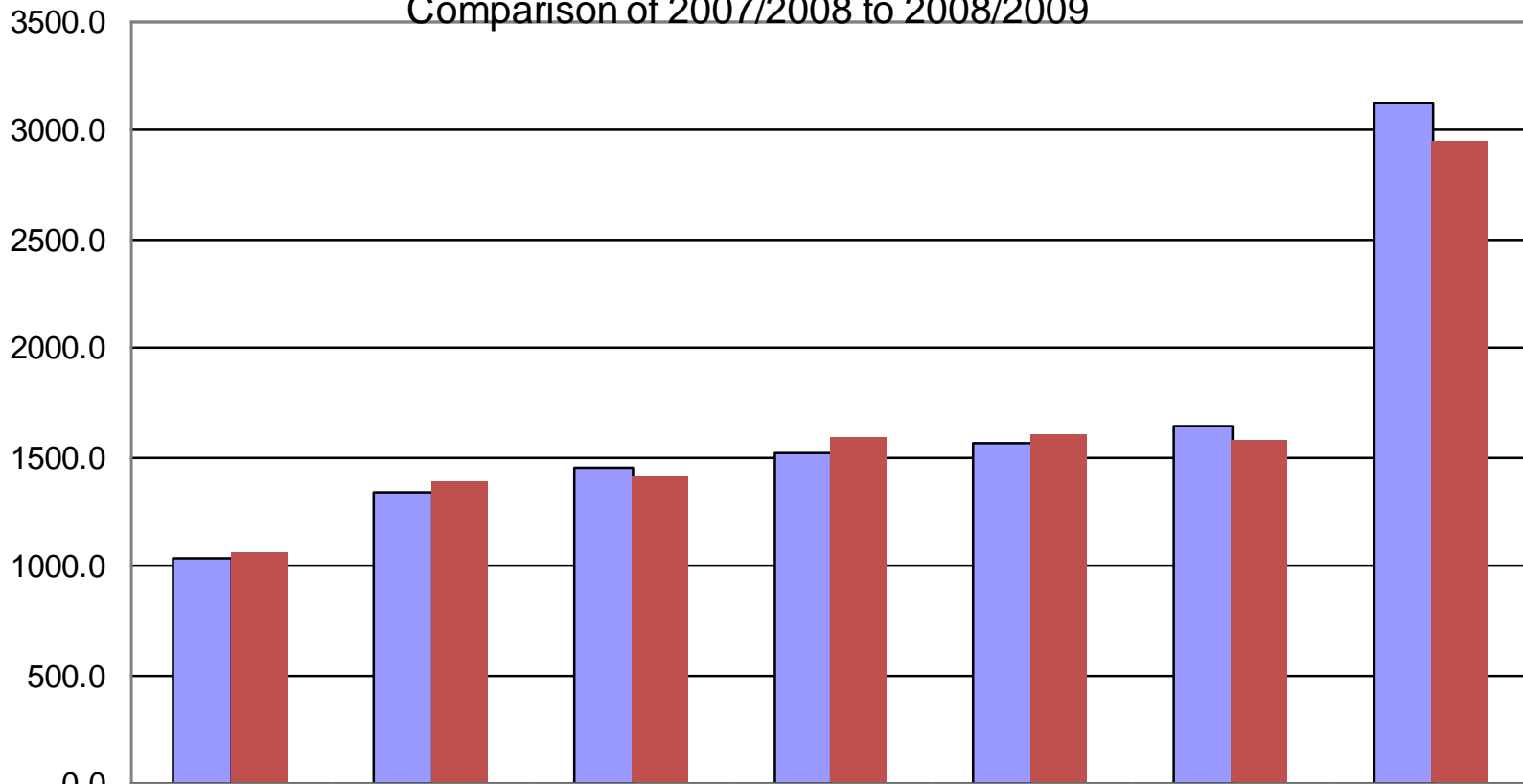
Kelsey School Division

Comparison of Revenue and
Expenditures

2007/2008 and 2008/2009

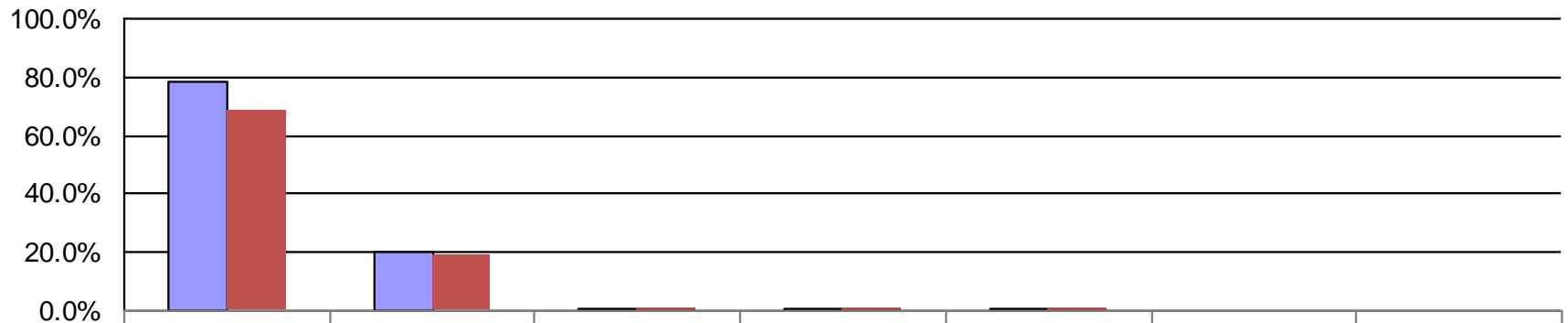
Kelsey School Division Enrolment

Comparison of 2007/2008 to 2008/2009



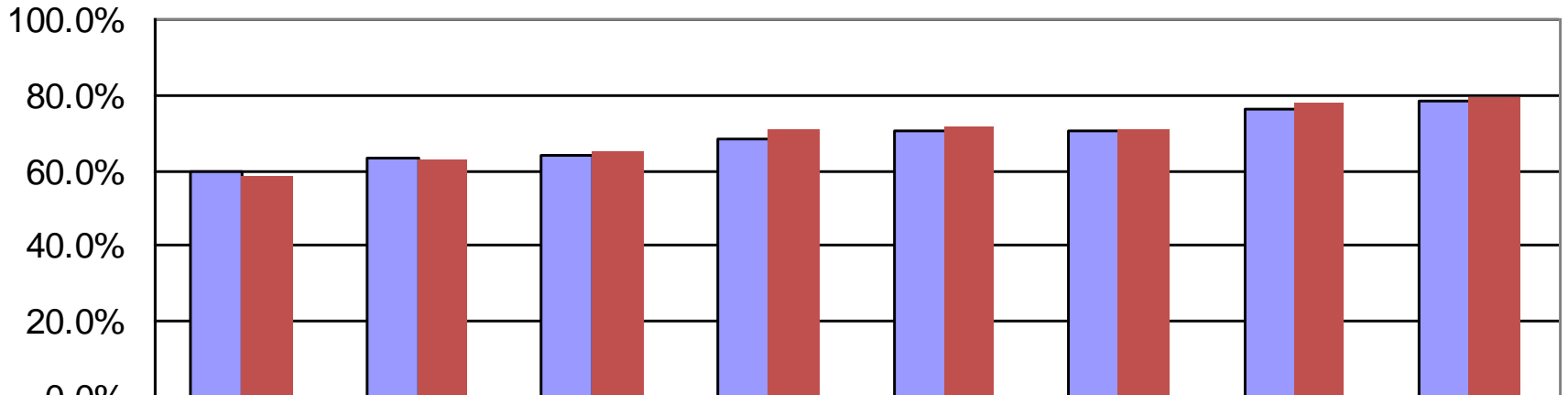
	Flin Flon	Fort La Bosse	Beautiful Plains	Western	Kelsey	Swan Valley	Mystery Lake
■ 2007/2008	1036.1	1342.7	1451.9	1519.5	1559.5	1642.2	3130.2
■ 2008/2009	1061.5	1384.2	1405.5	1583.5	1600.7	1580.8	2954

Kelsey School Division Total Revenue Comparison of 2007/2008 to 2008/2009



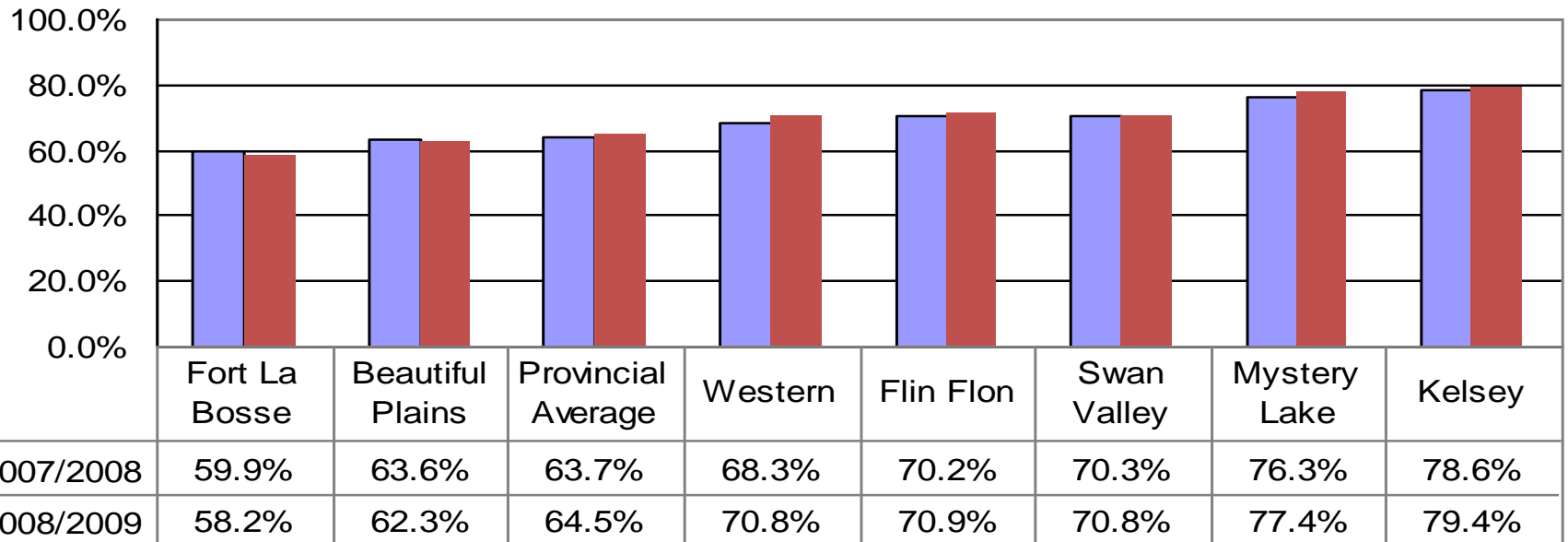
	Provincial Govt	Municipal	Other	Private Organizations	First Nations	Other Divisions	Federal Gov't
■ 2007/2008	78.6%	19.8%	0.6%	0.5%	0.4%	0.1%	0.0%
■ 2008/2009	68.6%	18.8%	0.6%	0.5%	0.6%	0.0%	0.1%

Revenue-Provincial Government Percentage of Total Revenue Comparison of 2007/2008 to 2008/2009

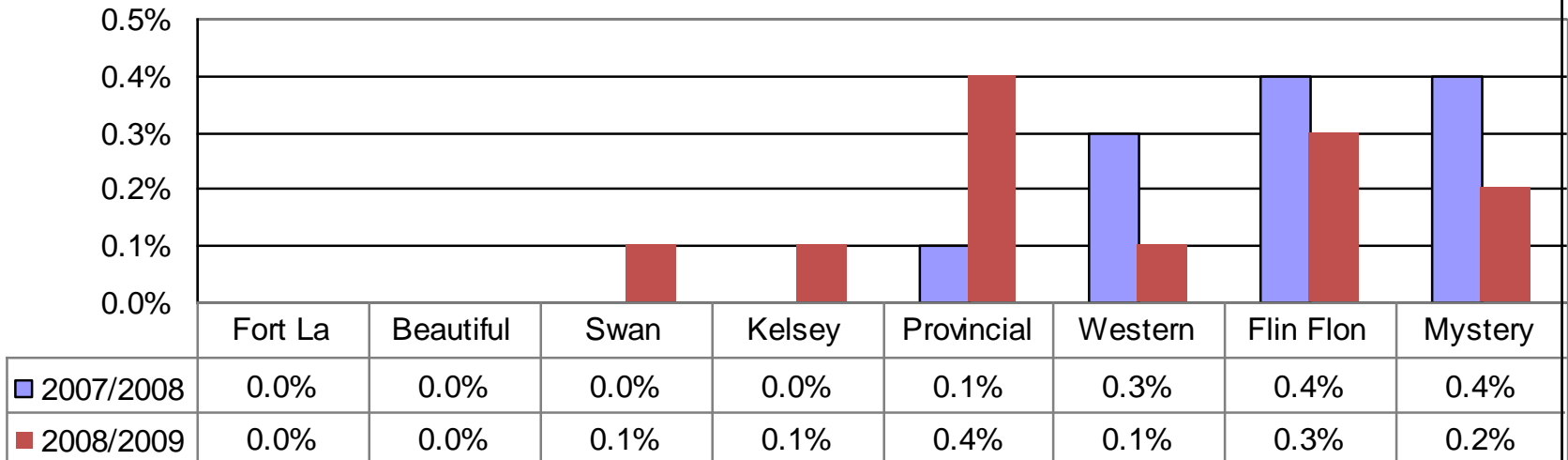


	Fort La Bosse	Beautiful Plains	Provincial Average	Western	Flin Flon	Swan Valley	Mystery Lake	Kelsey
■ 2007/2008	59.9%	63.6%	63.7%	68.3%	70.2%	70.3%	76.3%	78.6%
■ 2008/2009	58.2%	62.3%	64.5%	70.8%	70.9%	70.8%	77.4%	79.4%

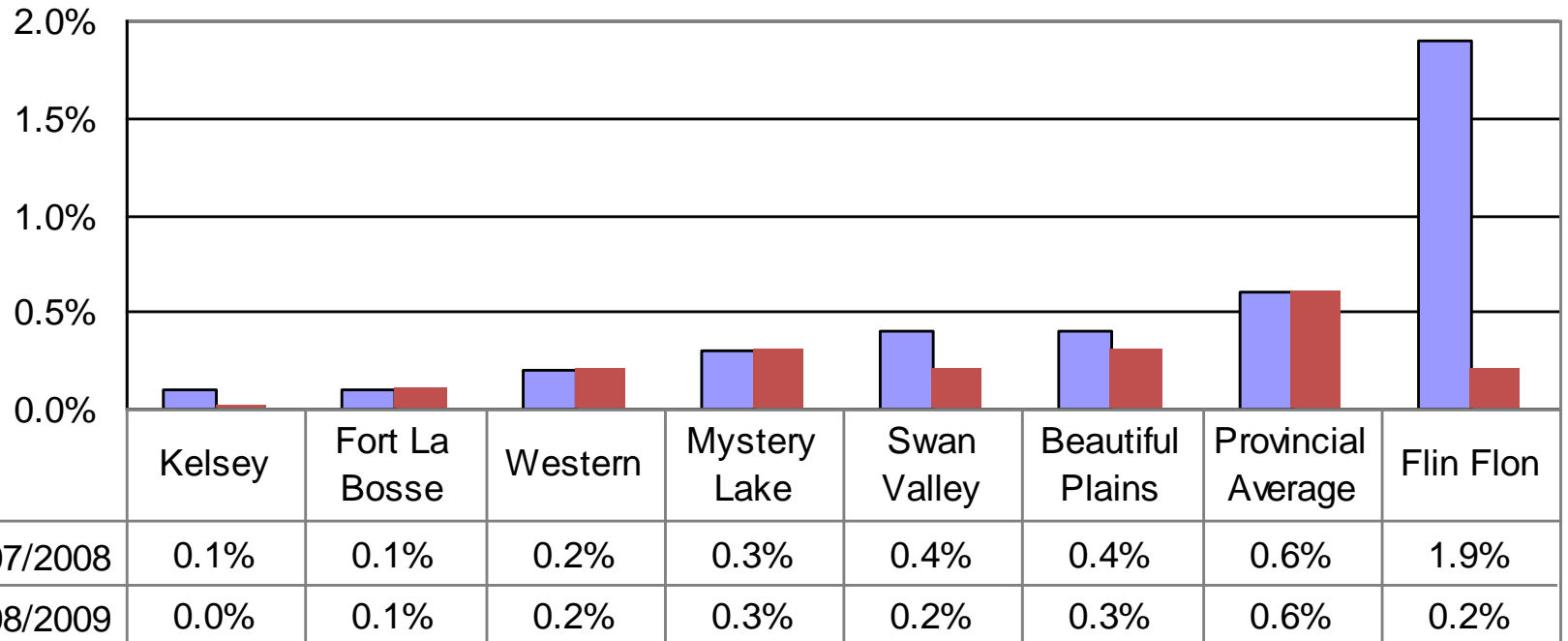
Revenue-Provincial Government Percentage of Total Revenue Comparison of 2007/2008 to 2008/2009



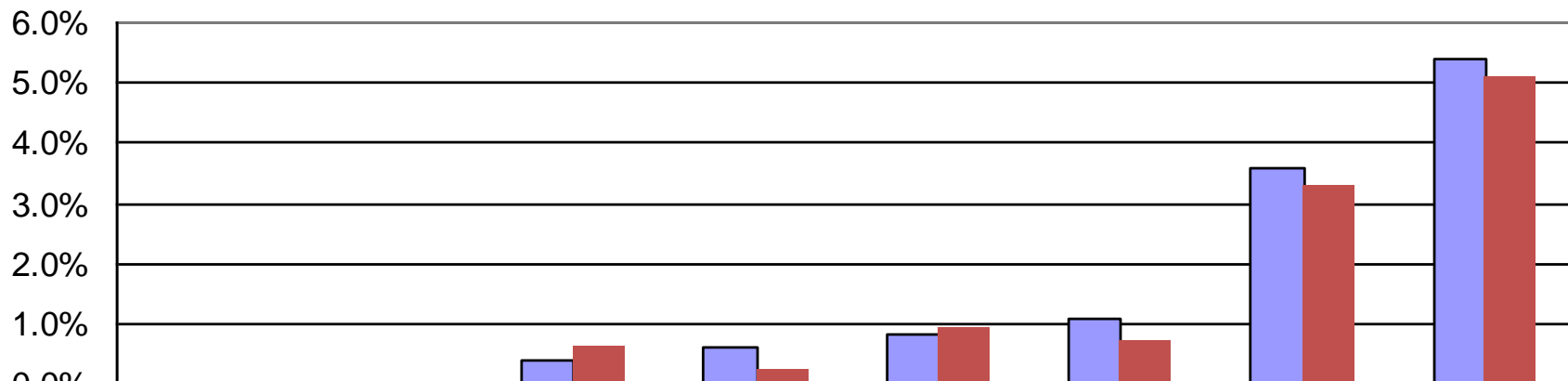
Federal Government Percentage of Total Revenue Comparison of 2007/2008 to 2008/2009



Other School Divisions Percentage of Total Revenue Comparison of 2007/2008 to 2008/2009



First Nations Percentage of Total Revenue Comparison of 2007/2008 to 2008/2009



■ 2007/2008

■ 2008/2009

Western

Beautiful
Plains

Kelsey

Flin Flon

Swan
Valley

Mystery
Lake

Provincial
Average

Fort La
Bosse

0.0%

0.0%

0.4%

0.6%

0.8%

1.1%

3.6%

5.4%

0.0%

0.0%

0.6%

0.2%

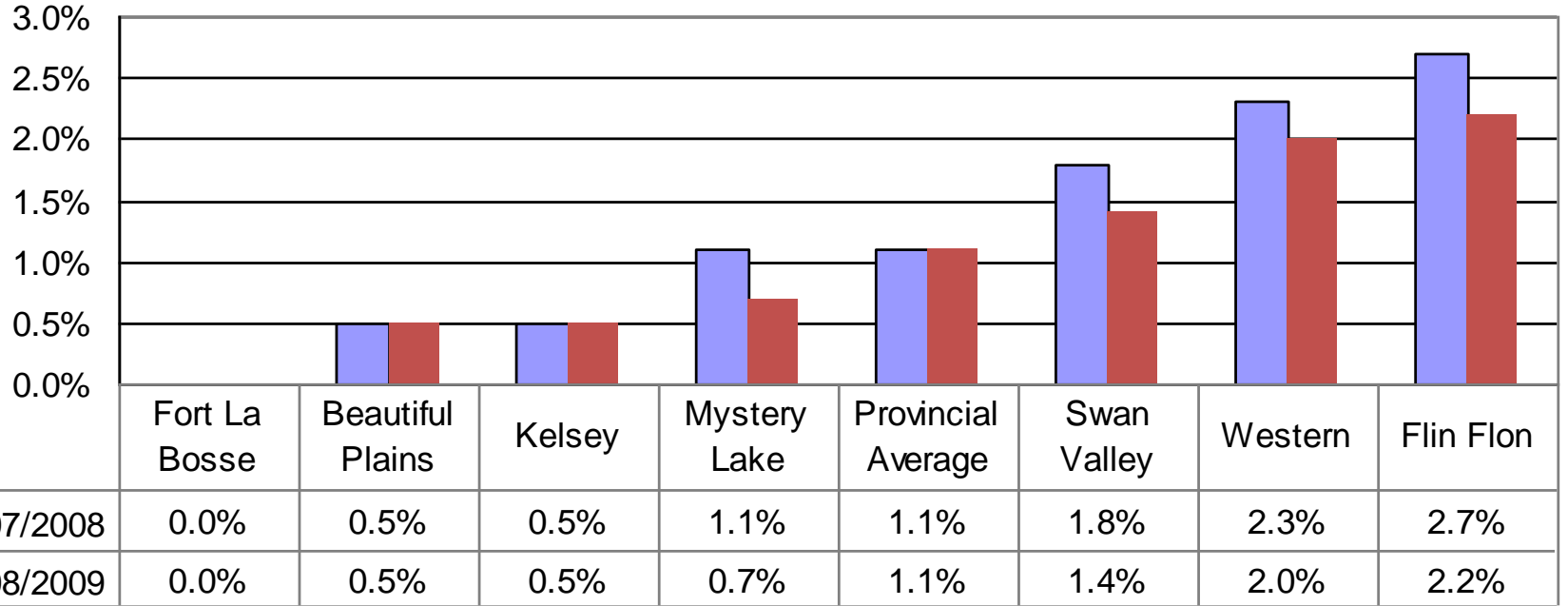
0.9%

0.7%

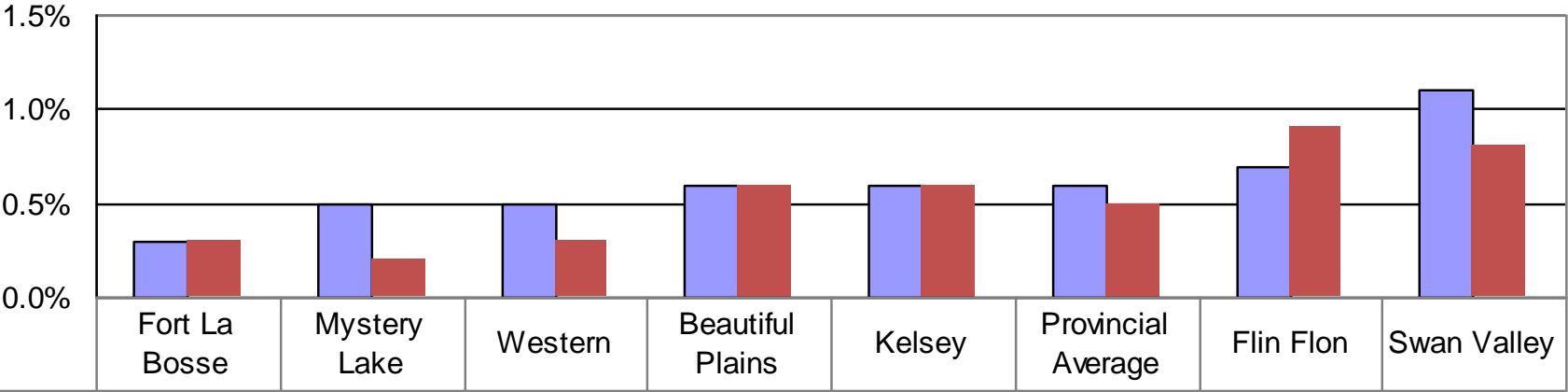
3.3%

5.1%

Private Organizations and Individuals Percentage of Total Revenue Comparison of 2007/2008 to 2008/2009

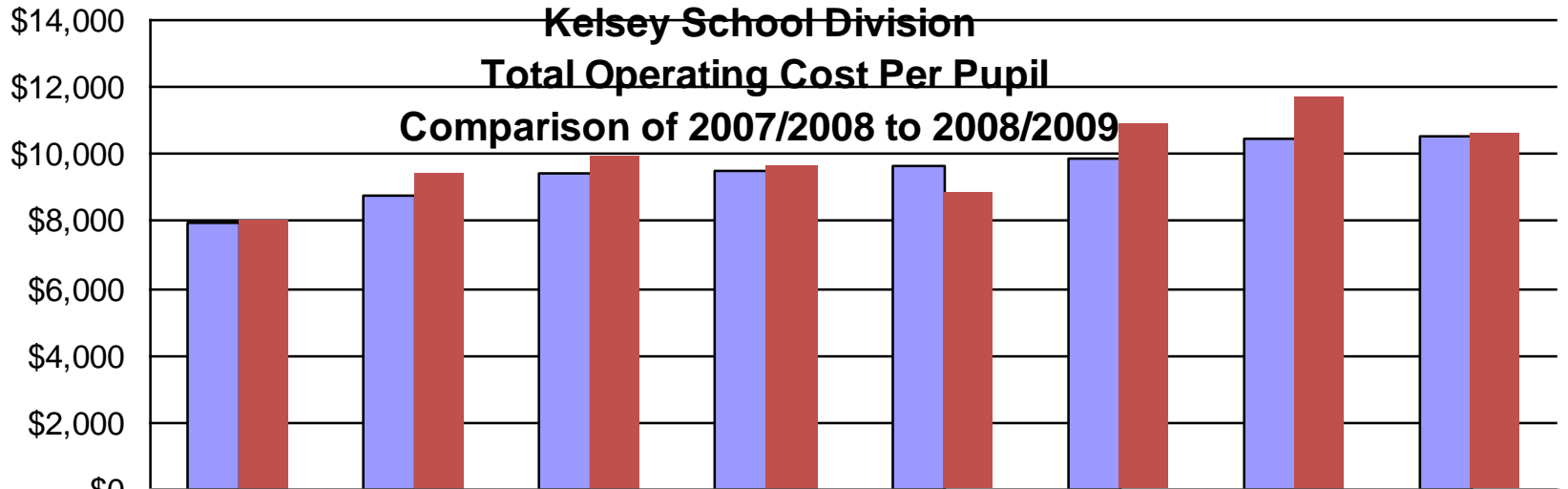


**Other Revenue
Percentage of Total Revenue
2007/2008**



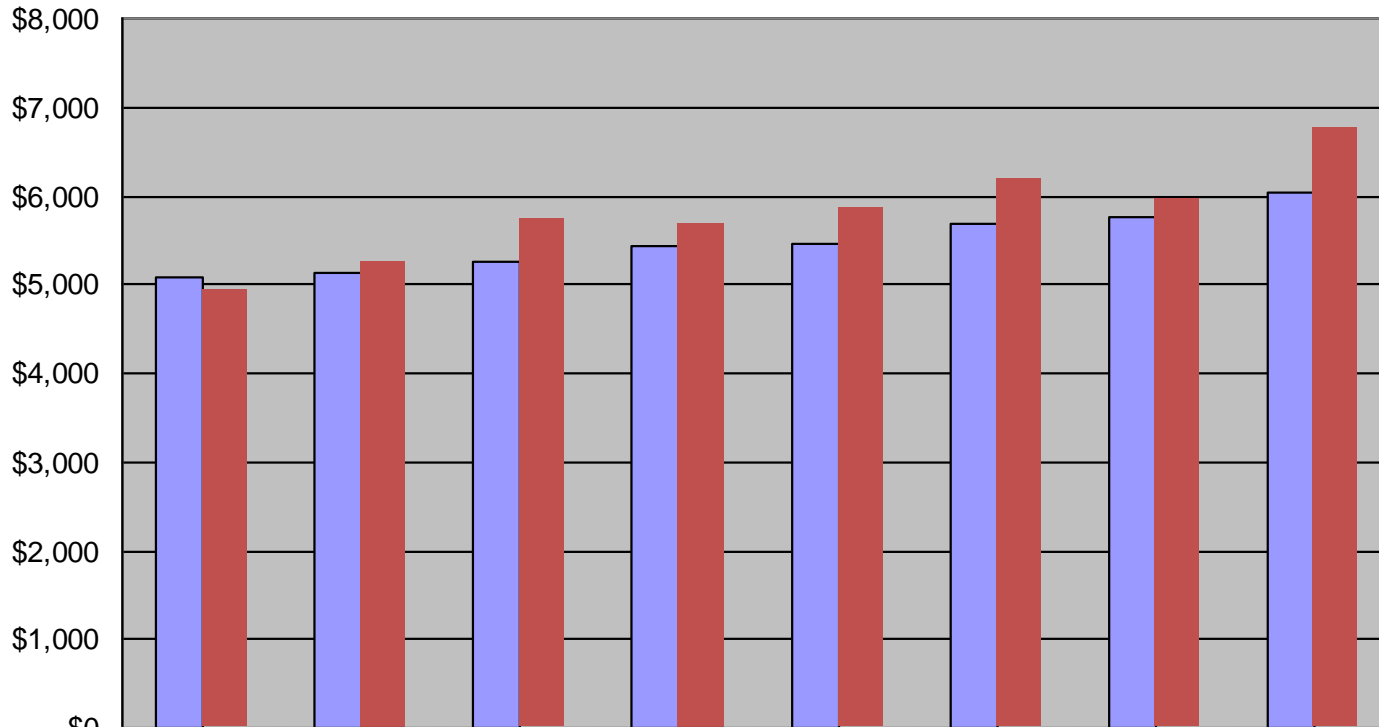
■ 2007/2008	0.3%	0.5%	0.5%	0.6%	0.6%	0.6%	0.7%	1.1%
■ 2008/2009	0.3%	0.2%	0.3%	0.6%	0.6%	0.5%	0.9%	0.8%

**Kelsey School Division
Total Operating Cost Per Pupil
Comparison of 2007/2008 to 2008/2009**



	Western	Beautiful Plains	Provincial Average	Kelsey	Fort La Bosse	Swan Valley	Mystery Lake	Flin Flon
■ 2007/2008	\$7,986	\$8,751	\$9,466	\$9,478	\$9,670	\$9,903	\$10,492	\$10,514
■ 2008/2009	\$8,040	\$9,453	\$9,967	\$9,649	\$8,839	\$10,904	\$11,684	\$10,641

**Regular Instruction
Expenditure per Pupil
Comparison
2007/2008 and 2008/2009**

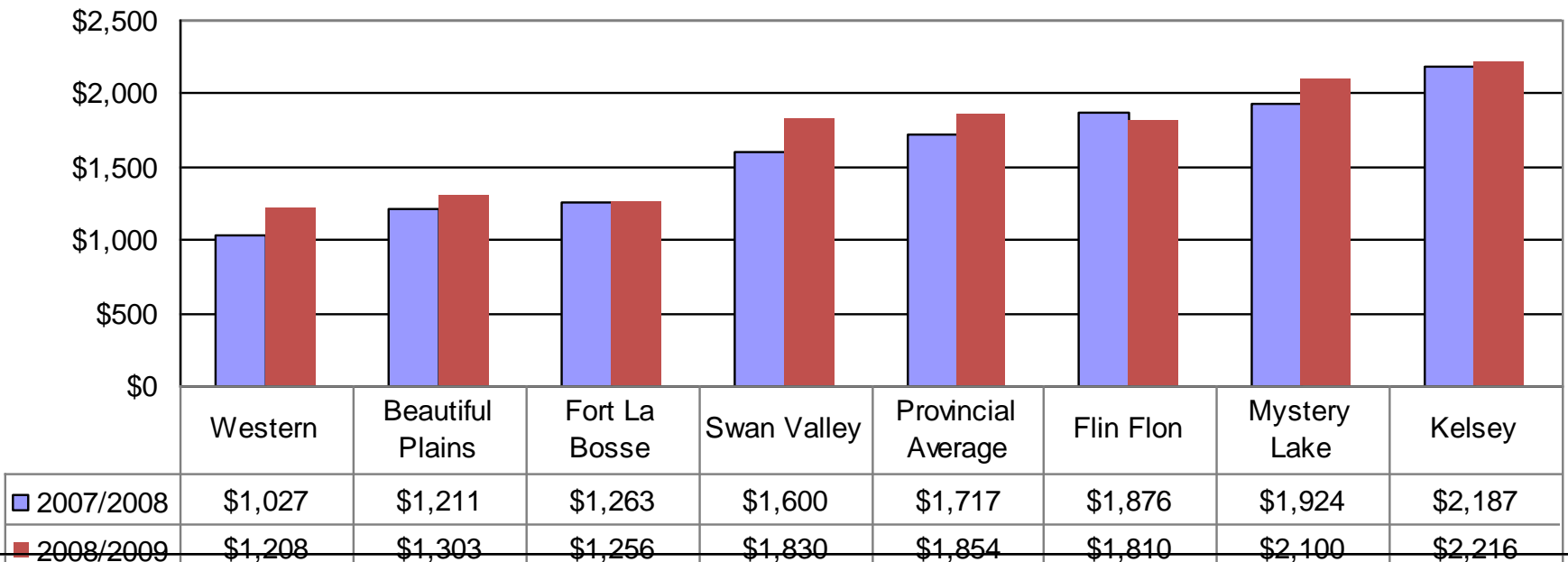


	Western	Kelsey	Beautiful Plains	Provincial Average	Fort La Bosse	Swan Valley	Flin Flon	Mystery Lake
2007/2008	\$5,079	\$5,120	\$5,268	\$5,422	\$5,453	\$5,697	\$5,751	\$6,034
2008/2009	\$4,920	\$5,257	\$5,733	\$5,680	\$5,871	\$6,194	\$5,956	\$6,768

2007/2008 Kelsey School Division spent \$302 per pupil less than the provincial average on Regular Instruction

2008/2009 Kelsey School Division spent \$423 per pupil less than the provincial average on Regular Instruction

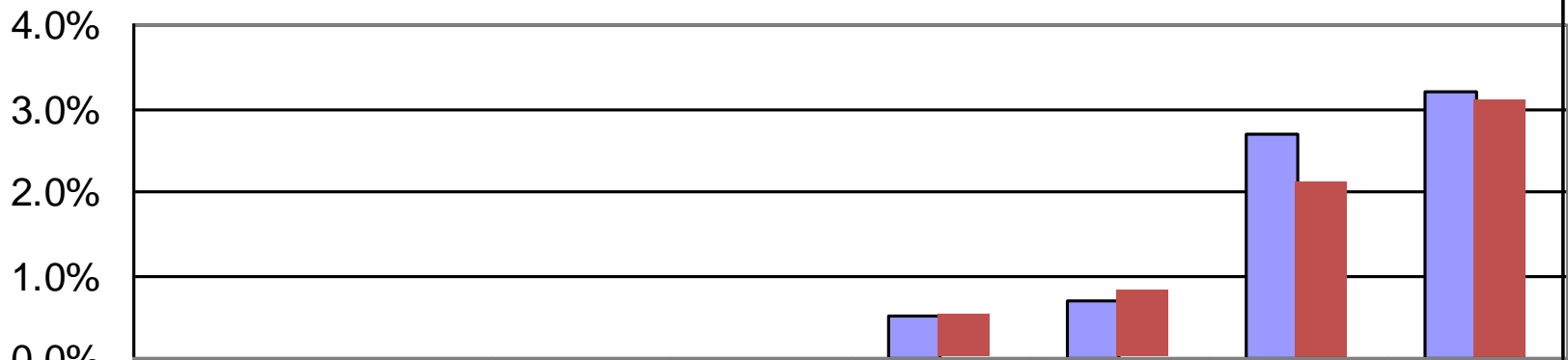
Student Support Services Expenditure Per Pupil Comparison 2007/2008 to 2008/2009



2007/2008 Kelsey School Division spent \$407 more per pupil than the provincial average on Student Support Services

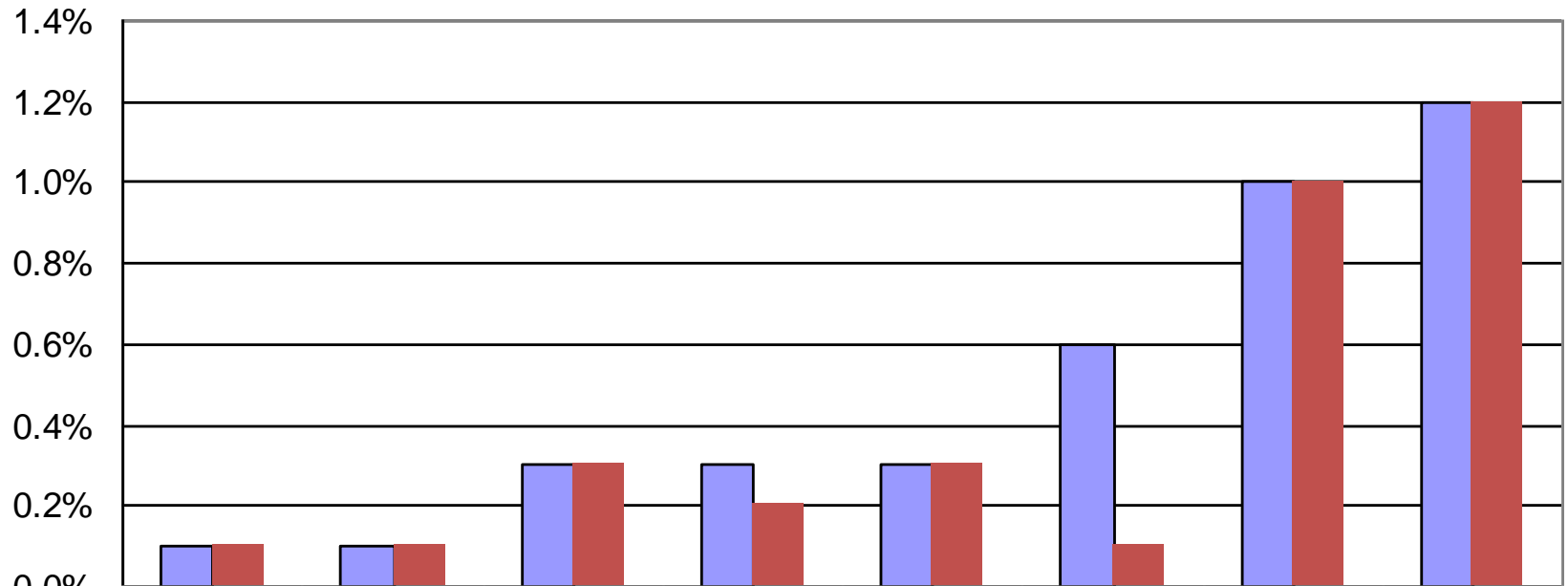
2008/2009 Kelsey School Division spent \$362 more per pupil than the provincial average on Student Support Services

Adult Learning Centers Percentage of Total Expenditures Comparison 2007/2008 to 2008/2009



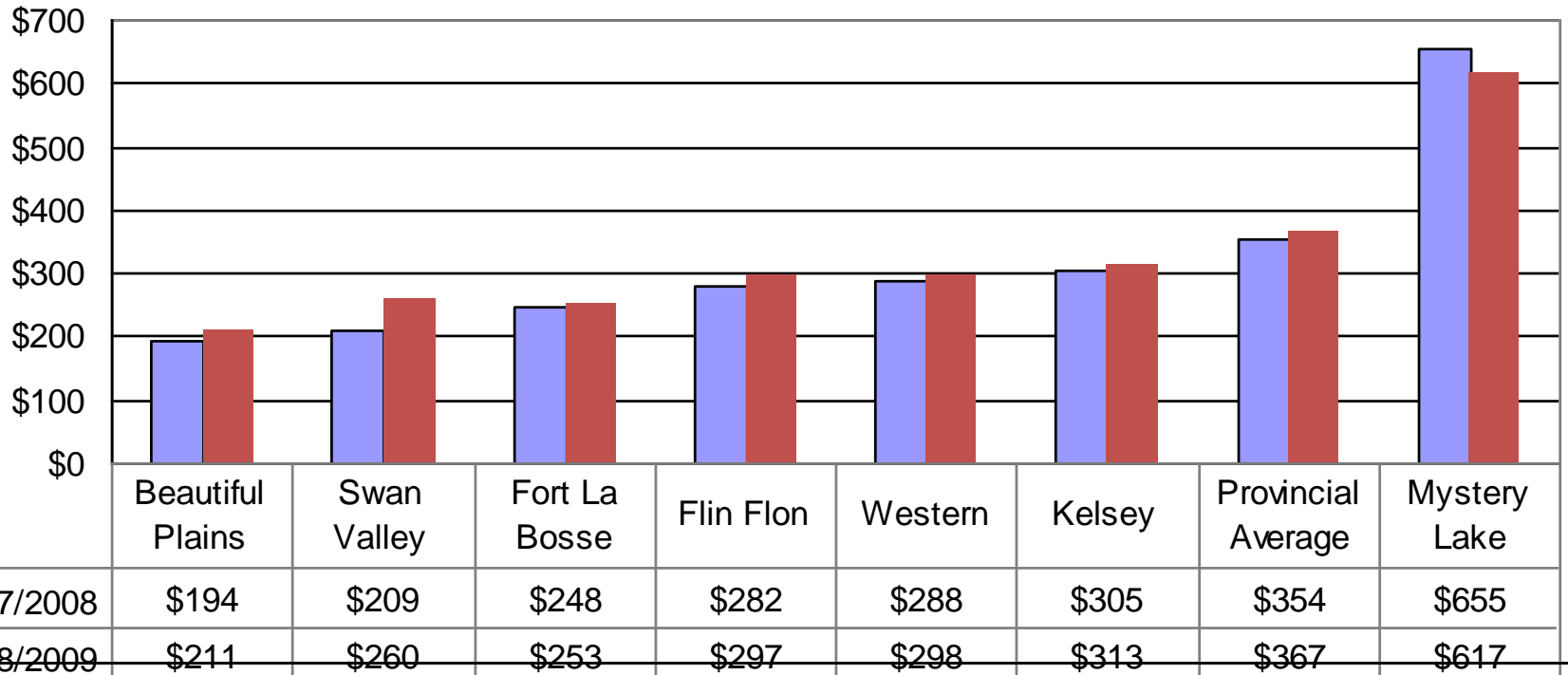
	Fort La Bosse	Swan Valley	Mystery Lake	Beautiful Plains	Provincial Average	Flin Flon	Western	Kelsey
■ 2007/2008	0.0%	0.0%	0.0%	0.0%	0.5%	0.7%	2.7%	3.2%
■ 2008/2009	0.0%	0.0%	0.0%	0.0%	0.5%	0.8%	2.1%	3.1%

Community Education Percentage of Total Expenditures Comparison 2007/2008 to 2008/2009



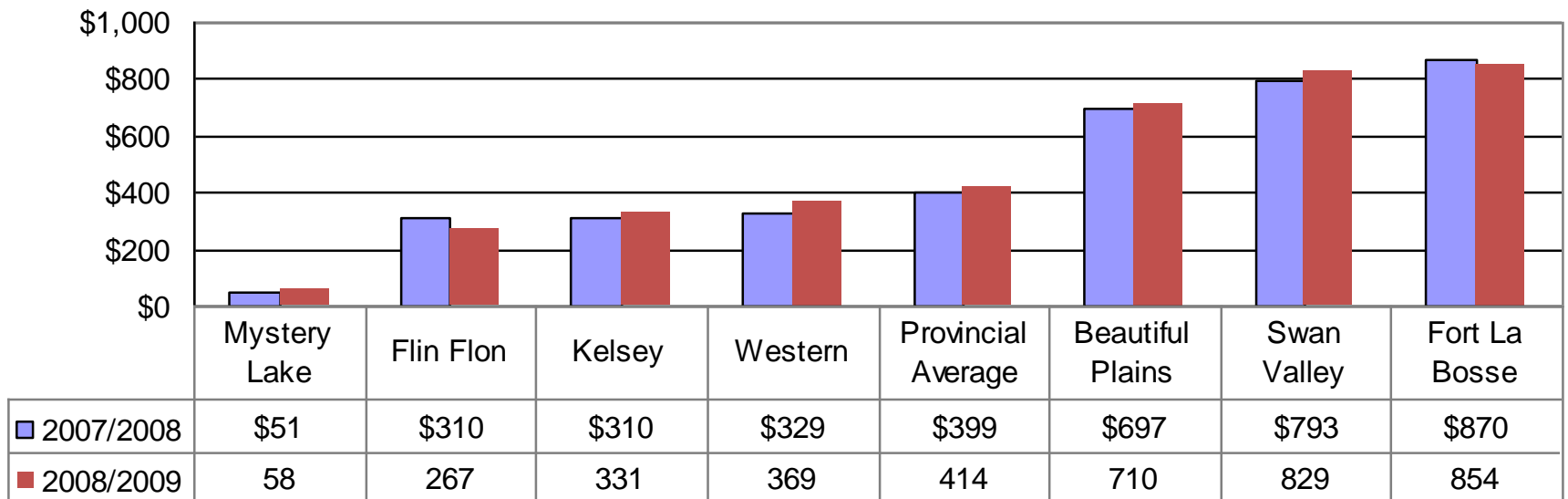
■ 2007/2008	0.1%	0.1%	0.3%	0.3%	0.3%	0.6%	1.0%	1.2%
■ 2008/2009	0.10%	0.10%	0.30%	0.20%	0.30%	0.10%	1.00%	1.20%

Instructional & Other Support Services Expenditure Per Pupil Comparison of 2007/2008 to 2008/2009



2007/2008 Kelsey School Division spent \$49 per pupil less than the Provincial Average
 2008/2009 Kelsey School Division spent \$54 per pupil less than the Provincial Average

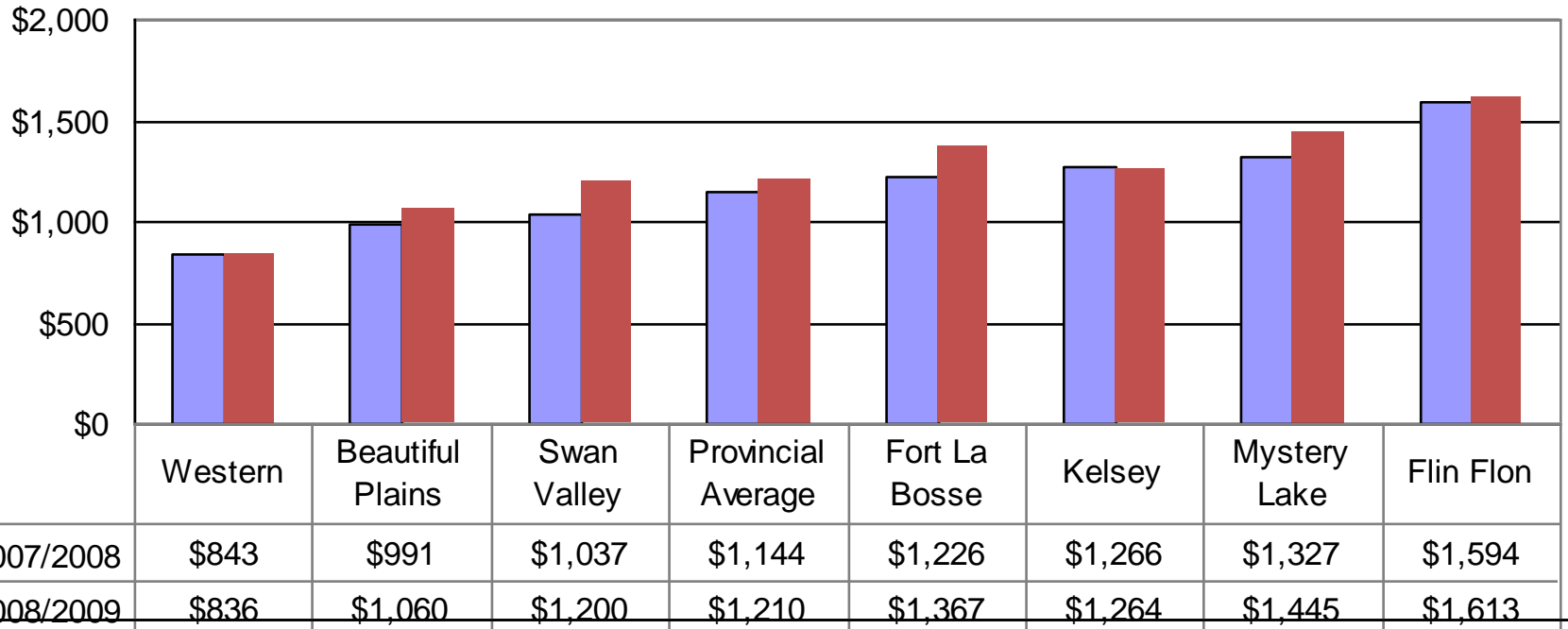
Transportation Expenditure Per Pupil Comparison of 2007/2008 to 2008/2009



2007/2008 Kelsey School Division spend \$89 per pupil less than the provincial average in Transportation

2008/2009 Kelsey School Division spend \$83 per pupil less than the provincial average in Transportation

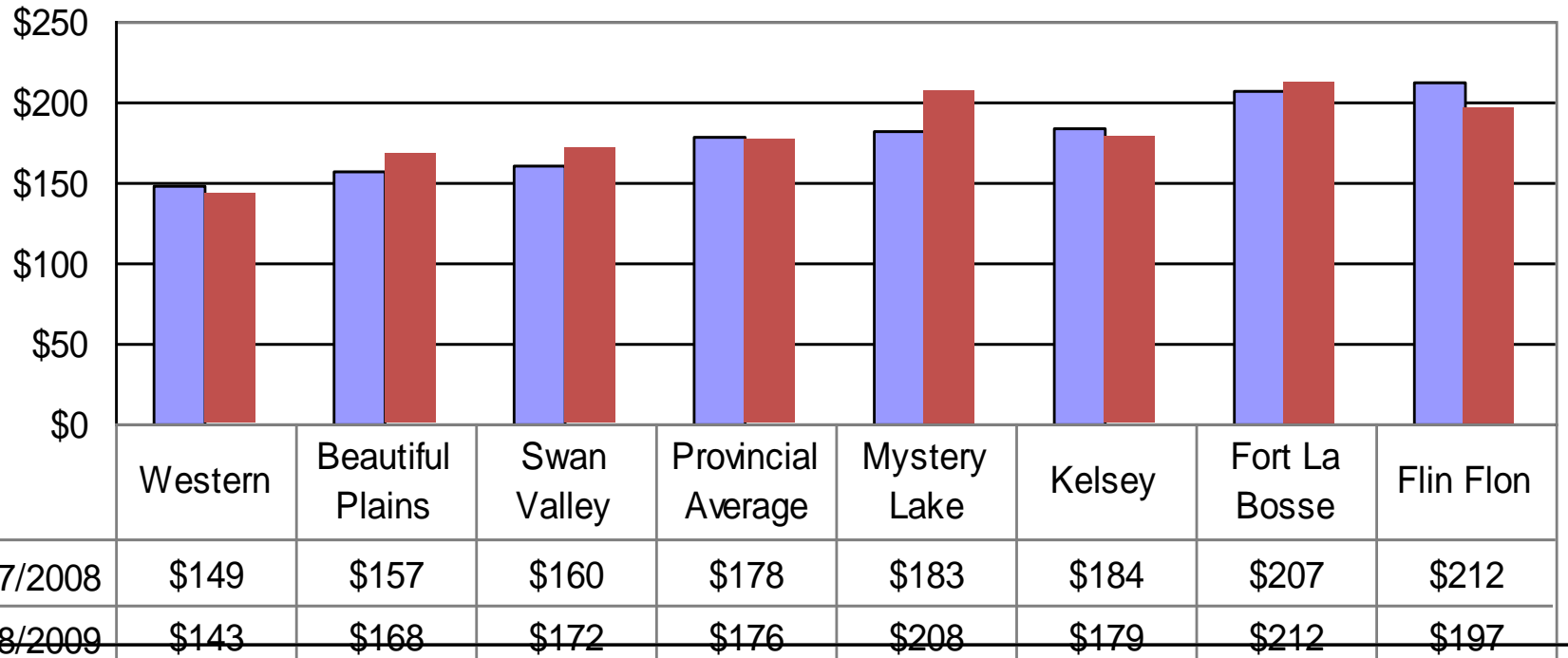
Operations & Maintenance Expenditure per Pupil 2007/2008



2007/2008 Kelsey School Division spent \$122 per student more than the provincial average in Operations and Maintenance

2008/2009 Kelsey School Division spent \$54 per student more than the provincial average in Operations and Maintenance

Fiscal Expenditure Per Pupil Comparison of 2007/2008 to 2008/2009

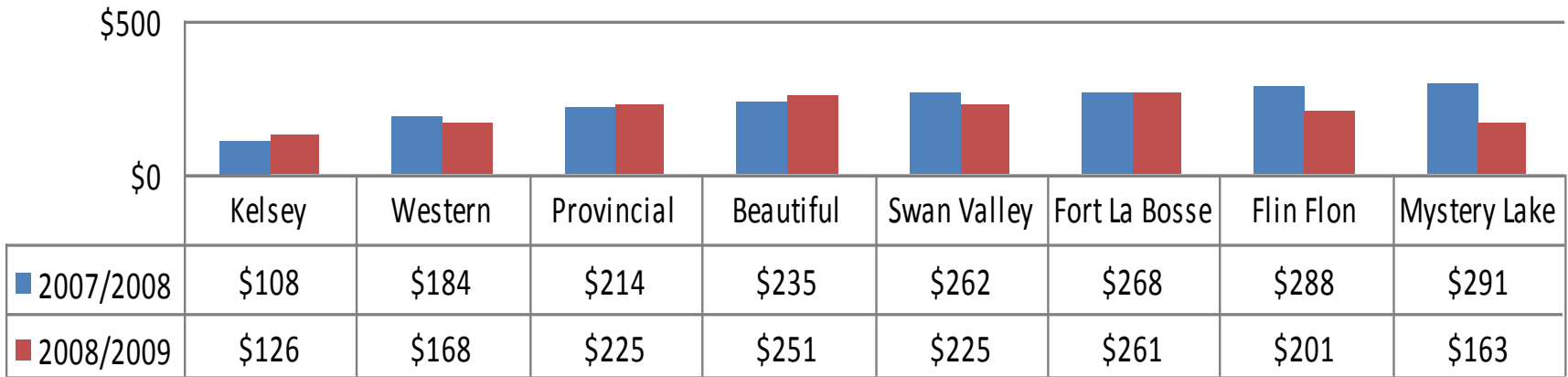


2007/2008 Kelsey School Division spent \$9 per student more than the provincial average in Fiscal

2008/2009 Kelsey School Division spent \$3 per student more than the provincial average in Fiscal

Technology

Comparison of 2007/2008 to 2008/2009



2007/2008 Kelsey School Division spent \$106 less per pupil than the Provincial Average
 2008/2009 Kelsey School Division spent \$99 less per pupil than the Provincial Average

**Kelsey School Division
Total Expenditures by Program
Comparison of 2007/2008 to 2008/2009**

